

Quote Order

Purchase Order #

Client Name

COMPANY _____ SHIP TO _____

DATE _____ CITY _____

CONTACT NAME _____ STATE | PROV _____ ZIP | POSTAL _____

PHONE _____ EMAIL _____

RESPIRA™ Back Support Kit Includes

- Ventilated Alloy Shell, 300 lb (136 kg) weight limit
- Sport Trim Kit **or** Comfort Trim Kit
- AirFlow Outer Cover
- Fixed Adjustable “FA” Mounts
- Hex Key tool
- 12 Month Warranty

SPORT TRIM

- Stimulite padding
- Silver embedded 3D Air Mesh
- Chrome edge trim

COMFORT TRIM

- Perforated gel infused memory foam
- SpaceTex® 3D Air Mesh cover
- Black edge trim

Optional

- Bolt Action Quick Release “BA” Mounts
- LUBS Lateral System
- Active Ventilation Fan

LOWER THORACIC

| SPORT TRIM | | | | | | |
|----------------------|---|----------------|---|--------|-----|--|
| DEPTH | WIDTH | HEIGHT | MODEL | MSRP | QTY | |
| 3” (8 cm) | 12” (30 cm) | 10” (25 cm) | RBS1210 | \$1295 | | |
| | | 12” (30 cm) | RBS1212 | \$1295 | | |
| | 14” (35 cm) | 10” (25 cm) | RBS1410 | \$1295 | | |
| | | 12” (30 cm) | RBS1412 | \$1295 | | |
| | 16” (41 cm) | 10” (25 cm) | RBS1610 | \$1295 | | |
| | | 12” (30 cm) | RBS1612 | \$1295 | | |
| | 18” (46 cm) | 10” (25 cm) | RBS1810 | \$1295 | | |
| | | 12” (30 cm) | RBS1812 | \$1295 | | |
| | 20” (51 cm) | 10” (25 cm) | RBS2010 | \$1295 | | |
| | | 12” (30 cm) | RBS2012 | \$1295 | | |
| | Profile | |  | | | |
| |  | | | | | |


MID THORACIC

| SPORT TRIM | | | | | | |
|----------------------|---|----------------|---|--------|-----|--|
| DEPTH | WIDTH | HEIGHT | MODEL | MSRP | QTY | |
| 3” (8 cm) | 12” (30 cm) | 14” (35 cm) | RBS1214 | \$1295 | | |
| | | 16” (41 cm) | RBS1216 | \$1295 | | |
| | 14” (35 cm) | 14” (35 cm) | RBS1414 | \$1295 | | |
| | | 16” (41 cm) | RBS1416 | \$1295 | | |
| | 16” (41 cm) | 14” (35 cm) | RBS1614 | \$1295 | | |
| | | 16” (41 cm) | RBS1616 | \$1295 | | |
| | 18” (46 cm) | 14” (35 cm) | RBS1814 | \$1295 | | |
| | | 16” (41 cm) | RBS1816 | \$1295 | | |
| | 20” (51 cm) | 14” (35 cm) | RBS2014 | \$1295 | | |
| | | 16” (41 cm) | RBS2016 | \$1295 | | |
| | Profile | |  | | | |
| |  | | | | | |

Mounting Hardware (1 Pair included per kit)

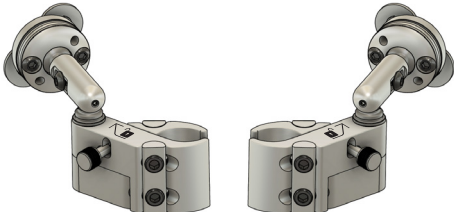
Fixed Adjustable “FA” Mount - (standard)

| DESCRIPTION | LENGTH | MSRP | ✓ | QTY |
|--------------------------|------------------|-------|---|-----|
| FA Mount Pair | 1.6” / 4cm Arm | Incl. | | |
| FA Mount Pair (Extended) | 2.1” / 5.5cm Arm | +\$25 | | |



Bolt Action Quick Release “BA” Mount - (optional)

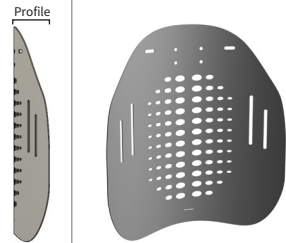
| DESCRIPTION | LENGTH | MSRP | ✓ | QTY |
|-----------------------|-------------|--------|---|-----|
| BA Mount (Left/Right) | 1” / 2.5 cm | +\$289 | | |



Continued on next page...

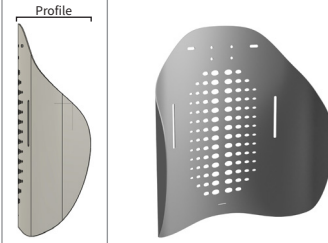
MID THORACIC

| COMFORT TRIM | | | | | |
|----------------|----------------|----------------|---------|--------|-----|
| DEPTH | WIDTH | HEIGHT | MODEL | MSRP | QTY |
| 3" (8 cm) | 12" (30 cm) | 14" (35 cm) | RBC1214 | \$1195 | |
| | | 16" (41 cm) | RBC1216 | \$1195 | |
| | 14" (35 cm) | 14" (35 cm) | RBC1414 | \$1195 | |
| | | 16" (41 cm) | RBC1416 | \$1195 | |
| | | 18" (46 cm) | RBC1418 | \$1195 | |
| | 16" (41 cm) | 14" (35 cm) | RBC1614 | \$1195 | |
| | | 16" (41 cm) | RBC1616 | \$1195 | |
| | 18" (46 cm) | 18" (46 cm) | RBC1618 | \$1195 | |
| | | 14" (35 cm) | RBC1814 | \$1195 | |
| | 18" (46 cm) | 16" (41 cm) | RBC1816 | \$1195 | |
| | | 18" (46 cm) | RBC1818 | \$1195 | |
| | | 14" (35 cm) | RBC2014 | \$1195 | |
| 20" (51 cm) | 16" (41 cm) | RBC2016 | \$1195 | | |
| | 18" (46 cm) | RBC2018 | \$1195 | | |
| | 14" (35 cm) | RBC2014 | \$1195 | | |



MID THORACIC DEEP

| COMFORT TRIM | | | | | |
|----------------|----------------|----------------|---------|--------|-----|
| DEPTH | WIDTH | HEIGHT | MODEL | MSRP | QTY |
| 6" (15 cm) | 12" (30 cm) | 14" (35 cm) | RBD1214 | \$1295 | |
| | | 16" (40 cm) | RBD1216 | \$1295 | |
| | 14" (35 cm) | 14" (35 cm) | RBD1414 | \$1295 | |
| | | 16" (41 cm) | RBD1416 | \$1295 | |
| | | 18" (46 cm) | RBD1418 | \$1295 | |
| | 16" (41 cm) | 14" (35 cm) | RBD1614 | \$1295 | |
| | | 16" (41 cm) | RBD1616 | \$1295 | |
| | 18" (46 cm) | 18" (46 cm) | RBD1618 | \$1295 | |
| | | 14" (35 cm) | RBD1814 | \$1295 | |
| | 18" (46 cm) | 16" (41 cm) | RBD1816 | \$1295 | |
| | | 18" (46 cm) | RBD1818 | \$1295 | |
| | | 14" (35 cm) | RBD2014 | \$1295 | |
| 20" (51 cm) | 16" (41 cm) | RBD2016 | \$1295 | | |
| | 18" (46 cm) | RBD2018 | \$1295 | | |
| | 14" (35 cm) | RBD2014 | \$1295 | | |



UPPER THORACIC

| COMFORT TRIM | | | | | |
|--------------|----------------|----------------|---------|--------|-----|
| DEPTH | WIDTH | HEIGHT | MODEL | MSRP | QTY |
| 3" (8 cm) | 14" (35 cm) | 20" (51 cm) | RBC1420 | \$1195 | |
| | | | RBC1620 | \$1195 | |
| | 18" (46 cm) | | RBC1820 | \$1195 | |
| | 20" (51 cm) | | RBC2020 | \$1195 | |



UPPER THORACIC DEEP

| COMFORT TRIM | | | | | |
|---------------|----------------|----------------|---------|--------|-----|
| DEPTH | WIDTH | HEIGHT | MODEL | MSRP | QTY |
| 6" (15 cm) | 14" (35 cm) | 20" (51 cm) | RBD1420 | \$1295 | |
| | 16" (41 cm) | | RBD1620 | \$1295 | |
| | 18" (46 cm) | | RBD1820 | \$1295 | |
| | 20" (51 cm) | | RBD2020 | \$1295 | |



ACTIVE VENTILATION FAN + CARBON FIBRE MOUNT

| MODEL | MSRP | ✓ | QTY |
|-------|-------|---|-----|
| RBFAN | \$249 | | |



Specifications:

Speed: 2900RPM - 4200RPM
 Battery Life Time: High Speed 3.3 hrs / Mid-Speed 5 hrs / Low Speed 16 hrs
 Material: ABS + Electronic Components
 Battery Capacity: 3000mAh (Included)
 Output Power: 3.6W
 Ports: USB 2.0, USB Type-C, Micro USB
 Charging Time: 3-4 Hours (USB 2.0)
 Size: 8cm x 4.9cm x 10.9cm (3.15" x 1.93" x 4.29")

Package Includes:

1 x USB Cooling Fan
 1 x USB 2.0 Charging Cable
 1 x Carbon Fibre Mount

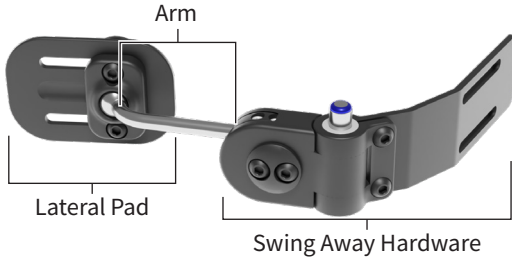


Lateral Upper Body Support (L.U.B.S.) - 360° Lateral Pad Positioning

SWING AWAY HARDWARE

| ARM LENGTH | MODEL | MSRP | LEFT | RIGHT | BACK MOUNT | CANE MOUNT |
|----------------------|--------|-------|------|-------|------------|------------|
| *5 15/16" (15 cm) | LUBSAH | \$397 | | | | |

*Note: Mounting arm can be cut to desired length
(Not compatible with "Lower Thoracic" or "Deep" back sizes)
Back Mount shown below. Also available with Cane Mount.



LATERAL SUPPORT SIZES

| PAD SIZE | MODEL | MSRP | LEFT | RIGHT | BACK MOUNT | CANE MOUNT |
|------------------------------------|--------|-------|------|-------|------------|------------|
| 2 3/4" x 3 3/4" (6.5 x 9 cm) | LPAD34 | \$209 | | | | |
| 2 3/4" x 4 3/4" (6.5 x 11.5 cm) | LPAD35 | \$209 | | | | |
| 3 3/4" x 4 3/4" (9 x 11.5 cm) | LPAD45 | \$209 | | | | |
| 3 1/2" x 5 1/2" (8.5 x 13.5 cm) | LPAD46 | \$209 | | | | |
| 4 3/4" x 5 3/4" (11.5 x 14 cm) | LPAD56 | \$209 | | | | |



FREE FORM LATERAL SUPPORT (Swing Away Hardware included)

| WIDTH | HEIGHT | MODEL | MSRP | LEFT | RIGHT | BACK MOUNT | CANE MOUNT |
|---------------|-------------------|------------|-------------|------|-------|------------|------------|
| 4" (10 cm) | 4" (10 cm) | LUBSFF3 | \$797 | | | | |
| 4" (10 cm) | 5 5/8" (14 cm) | LUBSFF4 | \$832 | | | | |
| 4" (10 cm) | 6 7/8" (17 cm) | LUBSFF5 | \$867 | | | | |
| 6" (15 cm) | 6 7/8" (17 cm) | LUBSFF7 | \$902 | | | | |
| 6" (15 cm) | 9 1/4" (23 cm) | LUBSFF10 | \$937 | | | | |
| - | - | LUBSFFCUST | Per Request | | | | |

LUBSFF3



LUBSFF4



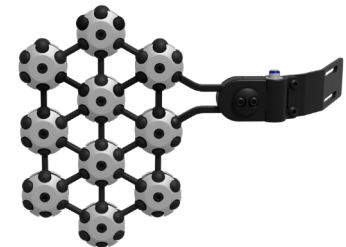
LUBSFF5



LUBSFF7



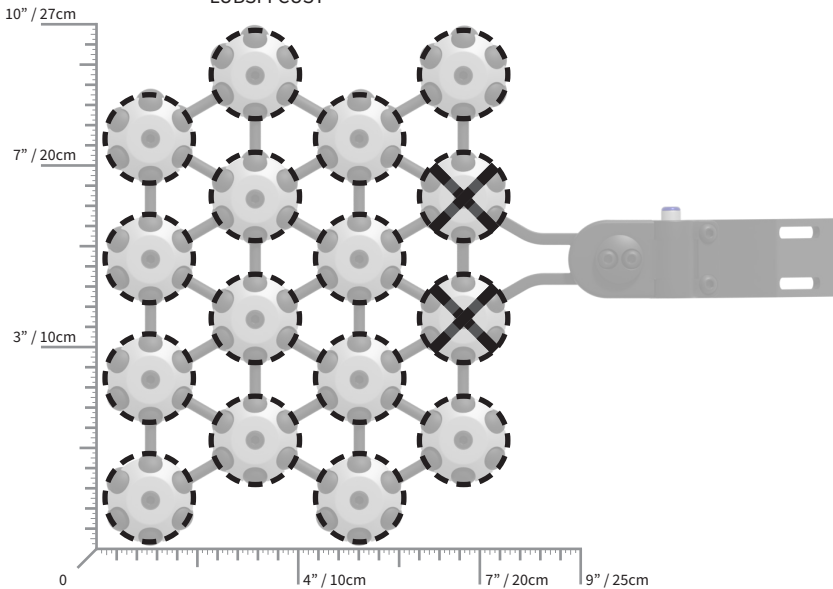
LUBSFF10



Free Form LUBS provides the ability to create a custom contoured trunk support pad.
Each size comes with a removable Free Form padded cover and swing-away hardware.

Standard Sizes

LUBSFFCUST



Custom Sizes

Use this diagram to select quadrants included to build a custom shape for a Free Form Lateral Support.

Mark quadrants with an "X" or fill in the circle completely to indicate shape.

Prices are subject to change without notice.

Headrest Hardware Options

APEX™ Headrest Hardware

| MODEL | MSRP | QTY |
|---------|-------|-----|
| APEX HH | \$419 | |



Infinity Link™ Headrest Hardware

| MODEL | MSRP | QTY |
|----------|-------|-----|
| INF HH | \$465 | |
| INF LINK | \$165 | |

INF LINK



Note: Infinity Link can be added to all Headrest Hardware for additional positioning range



Clinical Headrest Mounting Adapter

Mount a headrest to a wheelchair with an upholstery or fabric backrest.

| MODEL | MSRP | QTY |
|-------|-------|-----|
| CHAL | \$650 | |
| CHAM | \$650 | |
| CHAS | \$650 | |



TWIN™ Headrest Hardware

| MODEL | MSRP | QTY |
|----------------|-------|-----|
| TWIN HH | \$439 | |
| TWIN FLEX | \$663 | |
| TWIN DYN | \$740 | |
| TWIN FLIP | \$712 | |
| TWIN FLIP-FLEX | \$826 | |
| TWIN DYN-FLIP | \$897 | |

Note: All TWIN products available with 15mm square risers

TWIN™ HH



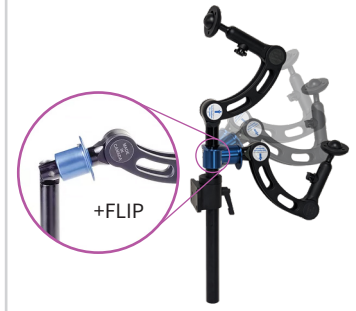
TWIN™ +FLEX



TWIN™ +Dynamic



TWIN™ +Flip



Accessories

Axion™ Rotary Interface

Lateral rotation for your headrest.

| ROTATION | MODEL | MSRP | QTY |
|----------|-----------|-------|-----|
| 60° | AXION6025 | \$940 | |
| 90° | AXION9025 | \$940 | |



Strapparatus™

Shoulder harness mounting made easy.

| MODEL | MSRP | QTY |
|-------------------------------------|-------|-----|
| STRP (Round) | \$249 | |
| STRP SQ12 (Square) (0.5" / 1.2 cm) | \$249 | |
| STRP SQ15 (Square) (0.59" / 1.5 cm) | \$249 | |



12/15 Square



Round



Notes

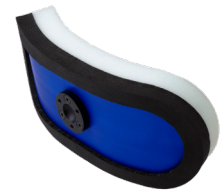
APEX Headrest Pads

| | WIDTH | COVER | MODEL | MSRP | COLOUR CODE | QTY |
|--|-------------|----------|---------|-------|-------------|-----|
| | 200mm (8") | NEOPRENE | AP200 | \$265 | | |
| | 200mm (8") | STARTEX | AP200S | \$315 | | |
| | 250mm (10") | NEOPRENE | AP250 | \$265 | | |
| | 250mm (10") | STARTEX | AP250S | \$315 | | |
| | 300mm (12") | NEOPRENE | AP300 | \$285 | | |
| | 300mm (12") | STARTEX | AP300S | \$340 | | |
| | 350mm (14") | NEOPRENE | AP350 | \$285 | | |
| | 350mm (14") | STARTEX | AP350S | \$340 | | |
| | 400mm (16") | NEOPRENE | AP400 | \$305 | | |
| | 400mm (16") | STARTEX | AP400S | \$365 | | |
| | 450mm (18") | NEOPRENE | AP450 | \$305 | | |
| | 450mm (18") | STARTEX | AP450S | \$365 | | |
| | 230mm (9") | NEOPRENE | APW230 | \$325 | | |
| | 230mm (9") | STARTEX | APW230S | \$387 | | |
| | 280mm (11") | NEOPRENE | APW280 | \$325 | | |
| | 280mm (11") | STARTEX | APW280S | \$387 | | |



Apex Headrest - Colour Guide

| COLOUR | COLOUR CODE |
|--------|-------------|
| BLUE | -U |
| BLACK | -K |
| PINK | -P |
| PURPLE | -L |
| RED | -R |



Shell & Foam (Internals)

Savant™ Head Positioning Custom mouldable gel head support.

| SIZE | COVER | MODEL | MSRP | QTY |
|-----------|--------|------------|-------|-----|
| Adult | Lycra | SAVANT-A | \$915 | |
| Small | Lycra | SAVANT-S | \$915 | |
| Pediatric | Lycra | SAVANT-P | \$915 | |
| Adult | Carbon | SAVANTCC-A | \$940 | |
| Small | Carbon | SAVANTCC-S | \$940 | |
| Pediatric | Carbon | SAVANTCC-P | \$940 | |

Savant™ Parts

| COVER | MODEL | MSRP | QTY |
|----------|-------------|------|-----|
| Lycra | SAVANT-SP | \$94 | |
| Carbon | SAVANTCC-SP | \$94 | |
| Spacetex | SAVANT-HB* | \$94 | |

*Note: Headband is included with each Savant Headrest.

Savant™ Configurations

| SIZE | COVER | MODEL | MSRP | QTY | COVER | MODEL | MSRP | QTY |
|-----------|-------|-------------|-------|-----|--------|---------------|-------|-----|
| Adult | Lycra | SAVANT-A-T | \$915 | | Carbon | SAVANTCC-A-T | \$940 | |
| Small | Lycra | SAVANT-S-T | \$915 | | Carbon | SAVANTCC-S-T | \$940 | |
| Pediatric | Lycra | SAVANT-P-T | \$915 | | Carbon | SAVANTCC-P-T | \$940 | |
| Adult | Lycra | SAVANT-A-TM | \$915 | | Carbon | SAVANTCC-A-TM | \$940 | |
| Small | Lycra | SAVANT-S-TM | \$915 | | Carbon | SAVANTCC-S-TM | \$940 | |
| Pediatric | Lycra | SAVANT-P-TM | \$915 | | Carbon | SAVANTCC-P-TM | \$940 | |
| Adult | Lycra | SAVANT-A-TB | \$915 | | Carbon | SAVANTCC-A-TB | \$940 | |
| Small | Lycra | SAVANT-S-TB | \$915 | | Carbon | SAVANTCC-S-TB | \$940 | |
| Pediatric | Lycra | SAVANT-P-TB | \$915 | | Carbon | SAVANTCC-P-TB | \$940 | |

Savant™ Headrest



Savant™ Headrest +Carbon Cover



Savant™ Sidepad +Carbon Cover



Savant™ Spacetex Headband



Savant-T (Top)



Savant-TM (Top-Middle)



Savant-TB (Top-Bottom)



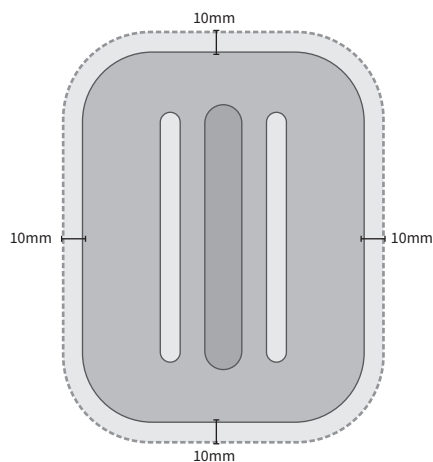
Prices are subject to change without notice.

L.U.B.S. DIMENSIONS

| MODEL | SIZE (INCHES) | SIZE (CENTIMETERS) |
|--------|-----------------|--------------------|
| LPAD34 | 2 3/4" x 3 3/4" | 6.5 x 9 cm |
| LPAD35 | 2 3/4" x 4 3/4" | 6.5 x 11.5 cm |
| LPAD45 | 3 3/4" x 4 3/4" | 9 x 11.5 cm |
| LPAD46 | 3 1/2" x 5 1/2" | 8.5 x 13.5 cm |
| LPAD56 | 4 3/4" x 5 3/4" | 11.5 x 14 cm |

L.U.B.S. PLATE DIMENSIONS

Diagram to scale when printed at 100% size on 8.5 x 11" standard paper.



*L.U.B.S. Pads increase profile of the plates on all sides by 10mm.

